

TREASURE VALLEY
PATH

June 2021

Quarterly Newsletter



Oh, What A Night!

We are thrilled to announce that Path will be purchasing a new ultrasound machine! The Art Auction was a wonderful event and blessing to Path. We were able to raise over \$50,000 to buy a new machine! We couldn't have done it without God's guidance and our community of supporters. The art was spectacular. To every artist that donated a piece of their treasures to auction, thank you. To each supporter that sent in ultrasound donations when they couldn't be at the event, thank you. To everyone in attendance that gave their time,

financial support, and encouragement, thank you. To our sponsors that covered the costs of the event, allowing every single dollar raised to go towards our new machine, thank you. The Path team is filled with so much gratitude, and we are blown away with the generosity you showed to Path and our clients.. A quality ultrasound



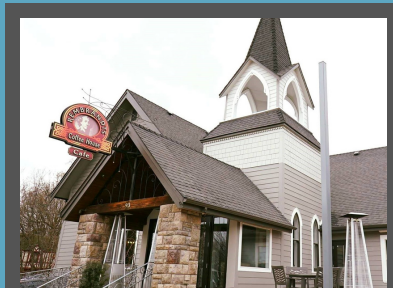
image can truly make a profound impact on our clients. Each woman that comes to Path will be able to see their baby clearly and we will be able to equip them with critical information as they make decisions on their baby's life. Our words don't do the miracle justice.

*For you created my inmost being; you knit me together in my mother's womb.
Psalm 139:13*

The PATH Team



THANK YOU REMBRANDTS!



93 S Eagle Rd,
Eagle, ID 83616

A very special 'thank you' to Rembrandts located in downtown Eagle. They opened their doors to Path and allowed us to use their space and waitstaff for our Art Auction fundraiser. We are thankful for their community support, and that they are a business that values the importance of helping others throughout the Treasure Valley.

Prayers of Praise & Petition



(Left to Right) Christie Blom & Sue Drayton from Path, and Adam Sharkey, Pastor Love & Mike Magalsky from Bridgepoint Church.

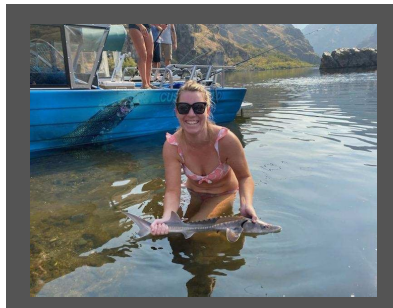
At Path, we are blessed with wonderful church partners. Earlier this Spring we were amazed and honored to receive a donation from Bridgepoint Church in Boise. Their donation was the initial 'seed money' to start our new ultrasound machine campaign. We praise God for His faithfulness and all of our prayer partners throughout the valley. Prayer is the most used & powerful tool at Path!

Therefore, we would be honored if you would join us in prayer over these petitions:

- Over the last year we have continued to see an increase in abortion calls at Path. We pray that we would have the opportunity to meet with these women before they end their pregnancy. Prayers that God would soften their heart and give us His words and guidance on how best to serve these women.
- Protection over the Moms that choose life for their babies, and healthy pregnancies.
- Peace of mind and healthy delivery for our clients that just completed our Childbirth & Beyond class at Path.
- God equips the called. Prayers for our volunteer nurses, that they feel confidence, peace, and patience while learning how to use our new machine.

Meet Monica

Monica has a passion for serving others through her work as an ICU nurse and volunteer nurse at Path. She is originally from Washington state, graduated from Carroll College and nursing school in Montana, before moving to Idaho.

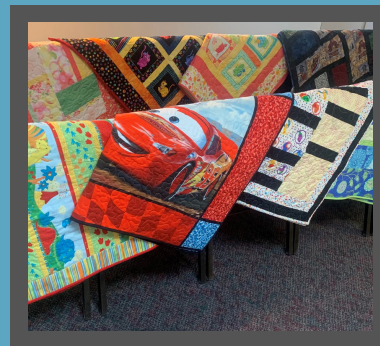


Monica has personal experience with adoption as a birth mom and can add helpful perspective to clients making an adoption plan. She started with Path in 2018 and returned this year after spending time as a traveling nurse. If she is not at the hospital or Path, you will probably find her playing in the mountains of Idaho while eating Sour Patch Kids. Her eagerness to help Path and 'fill-in' wherever she is needed makes her a true treasure. Welcome back, Monica!

Sweetest Gift

She selects wool and flax and works with eager hands.

Proverbs 31:13



We are excited to give the moms of our Childbirth & Beyond class a beautiful hand-made quilt from the quilting group at Grace Bible Church. Each unique quilt is delightfully cozy and most importantly, made with love.

Upcoming Events



Healthy Pregnancy Class
Offered Weekly

Childbirth and Beyond Class
Offered Monthly

Treasure Valley Path

1327 W. Beacon St.
Boise, ID 83706
208.384.9504



www.treasurevalleypath.org

